

# Berzerk | Frenzy Multigame Installation Guide



# Overview

Follow this short pre-install checklist to ensure a smooth, safe installation and reliable operation of your high score save kit.

## Safety First

- **Power Off & Unplug:** Turn the game **off** and **unplug the cabinet** before touching the game board.
- **ESD Precautions (Recommended):** Work on an anti-static mat and ground yourself to avoid electrostatic discharge.

## Preparation Checklist

- **Verify Board Health:** Confirm your **game board is 100% working** *before* installing the kit.
- **Remove Board Safely:** With power **off**, carefully remove the game board from the cabinet.
- **Label Connectors:** Tag **every connector and cable** you disconnect. Clear labels make re-installation fast and accurate.
- **Record Orientation:** Note the **orientation of each connector/cable**. *(Tip: take photos from multiple angles for reference.)*
- **Set Up Your Workspace:** Use a **well-lit workbench** with enough room to lay out the board, kit, and tools.

## Next Step

Follow the instructions step-by-step using the photos below and the labels you created during the preparation checklist.

## The Berzerk Multigame kit contains -

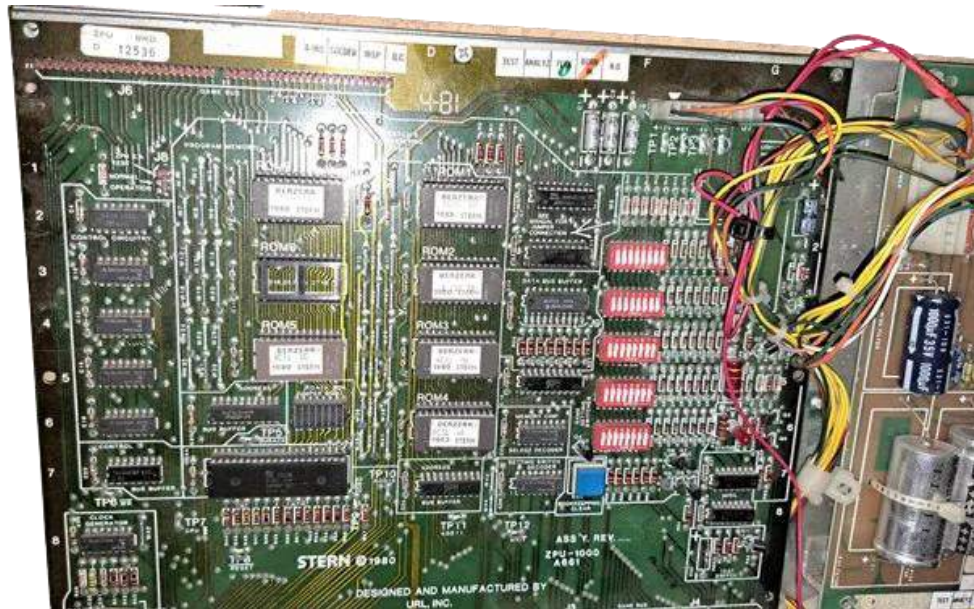
1 – z80 Daughter card

**Z80 processor required.** Purchase via the product page options, or install with your current Z80.

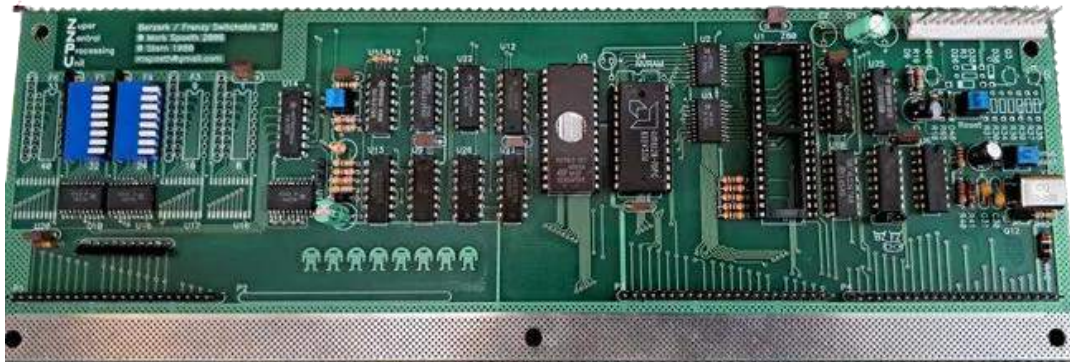
# Overview –

This is what your pcb should look like. This kit will only work on a Berzerk or Frenzy ZPU or ZZPU PCB.

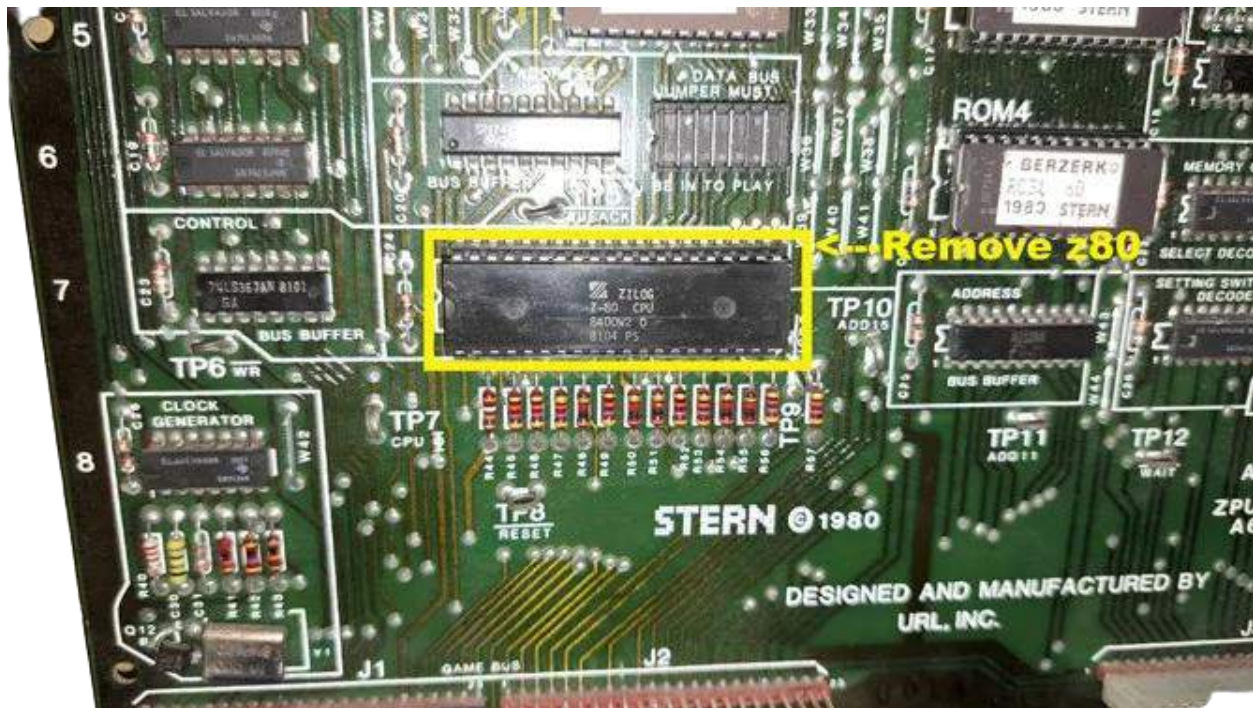
Original ZPU -



Or a ZZPU –



1. Locate your z80. [It is on the ZPU PCB of your stack]



ZZPU –



2. Remove your z80 and install on your save kit. [Note – orientation for Pin1]



ZZPU –



3. [Optional] Program ROMs can be removed.

4. Your PCB will now look like this –



ZZPU –



## You're done!

- Double check your work
- Install back in cabinet using pictures you took and any marked connectors
- Power up the game and enjoy!
- If the game does not start, turn power off immediately, double check your work.

## How do I get to the menu settings?

With the power off on your game. Press and hold P1 while you turn the game on. Release P1 button when the screen tells you to. You are now in the main menu settings. This is a feature built into your kits, so the menu settings are not accessible to your guests or family.

Now, having said that, you need to enable this feature in the menu settings, or disable if you want your kit to give you approximately 5 seconds every time you turn on your game.

## Helpful links –

Homepage - <https://www.highscoresaves.com/>

Product Page - <https://www.highscoresaves.com/Berzerk-Frenzy-Multigame-Free-Play-and-High-Score-Save-Kit/SW10006>

What's a Wi-Fi kit? - <https://www.highscoresaves.com/What-s-a-WiFi-Enabled-Kit-or-Standard-Kit/>

Tips and Tricks -

[https://www.highscoresaves.com/media/a6/28/5e/1756433395/Highscoresaves%20Tips%20and%20Tricks\\_compressed.pdf?ts=1756433395](https://www.highscoresaves.com/media/a6/28/5e/1756433395/Highscoresaves%20Tips%20and%20Tricks_compressed.pdf?ts=1756433395)