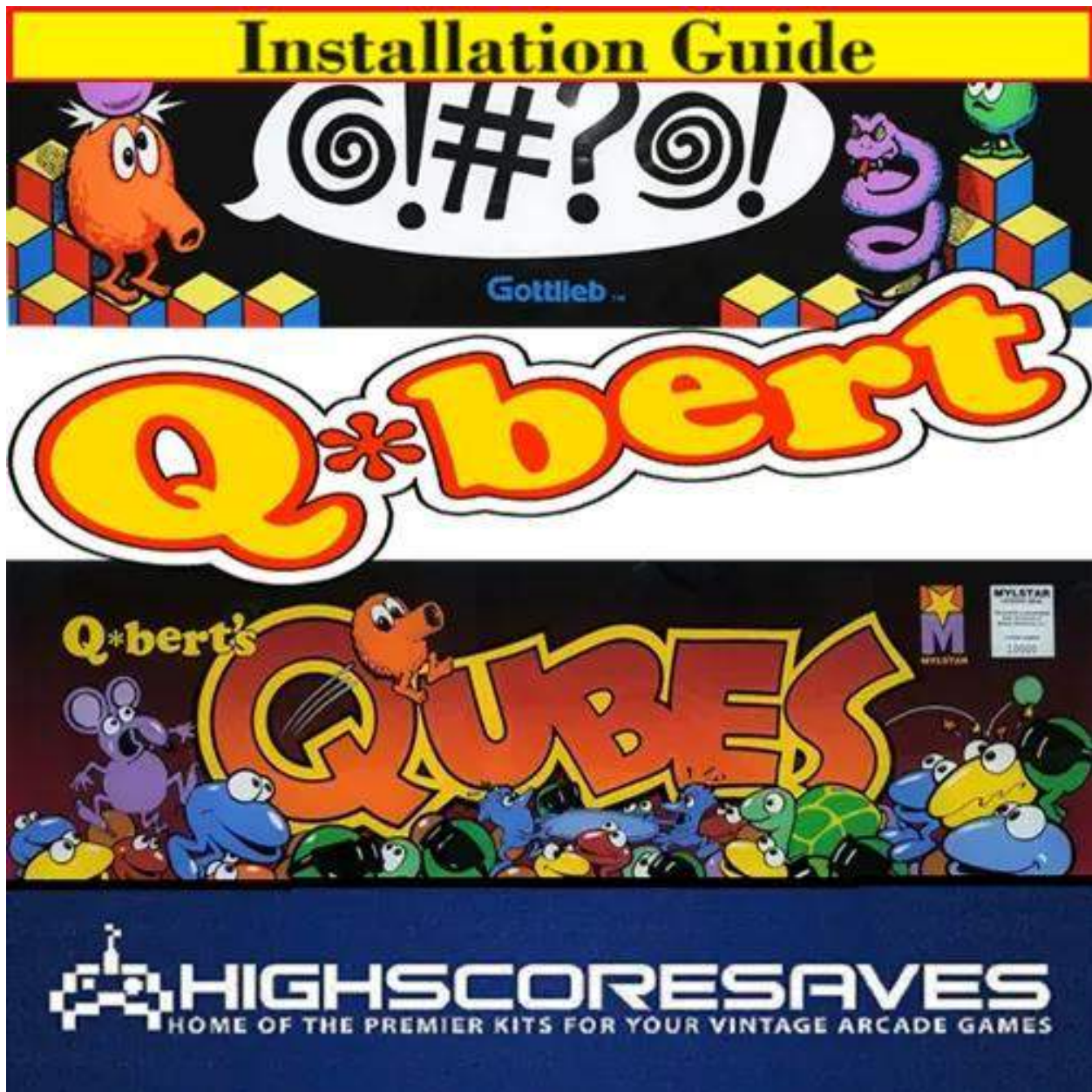


Qbert Multigame Installation Guide



<https://highscoresave.com/>

Steps for a successful install of your online or offline high score save kit -

- Ensure your gameboard is working 100% before installing kit
- Ensure power to game is off before removing your gameboard from cabinet
- Label any connectors that you will be disconnecting. This will make reinstalling easier once kit is on gameboard
- **Note which way your connectors/cables are on.** (We suggest taking pictures to help you remember!)
- Work in a well-lit area on your workbench

The Qbert Multigame kit contains -

- 1 – 8088 Daughter card
- 1 – Background Daughter Card
- 1 – Foreground Daughter Card
- 1 – Sound Daughter Card
- 1 – Ribbon Cable

Please note – you will need a 8088 to install on this kit. There is an option to purchase in the drop downs of the product page when you order. Or you can use an existing one

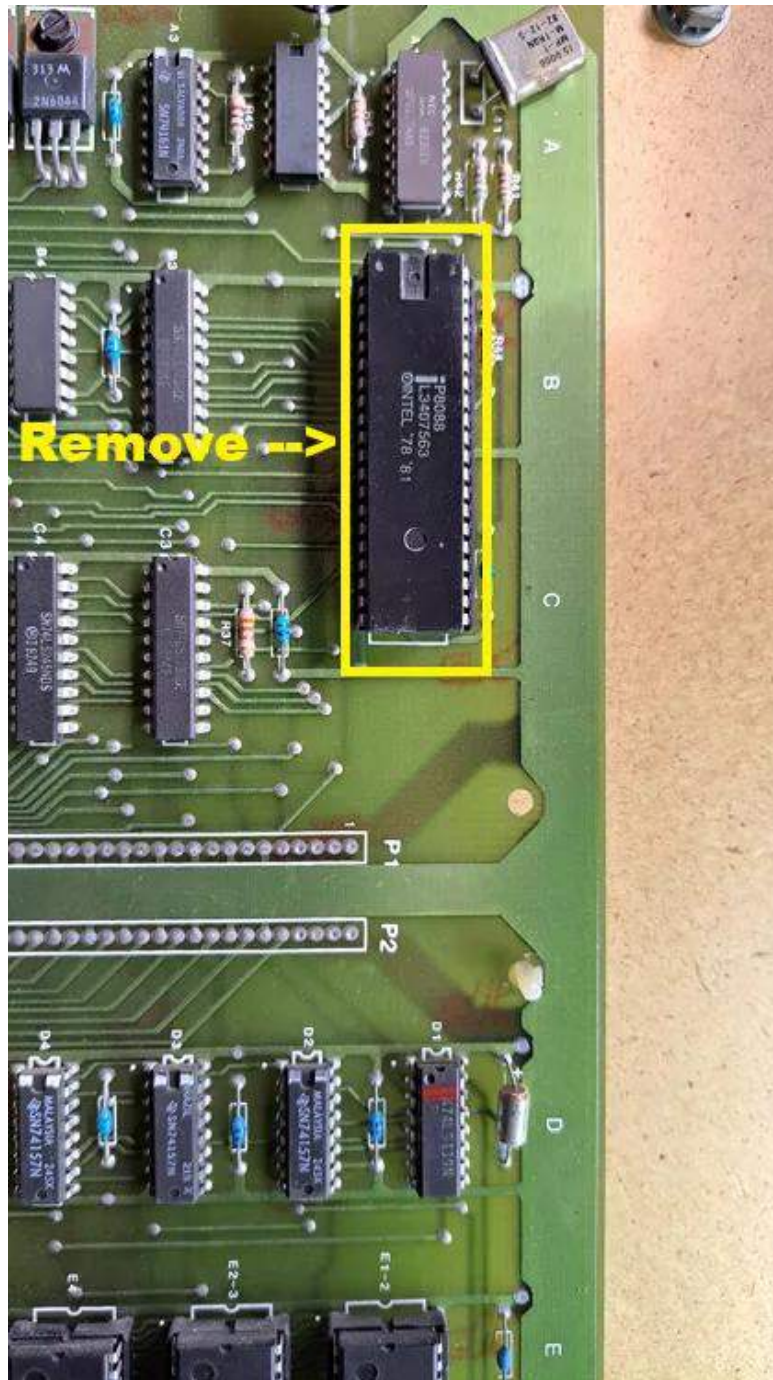
Overview –

Start with locating your 8088 socket. Ensure that 8088 is socketed. Otherwise, you will need to install a socket.

This is what your pcb should look like. This kit will only work on a QBert PCB.



1. Locate your 8088 at B1 on Main Qbert PCB. Remove.



2. Install the 8088 onto the daughter card then attach on PCB like this.
[Ensure PIN 1 of the 8088 is installed with the proper orientation]-



3. Ensure that nothing is hitting the underside of the new daughter card from your original PCB.

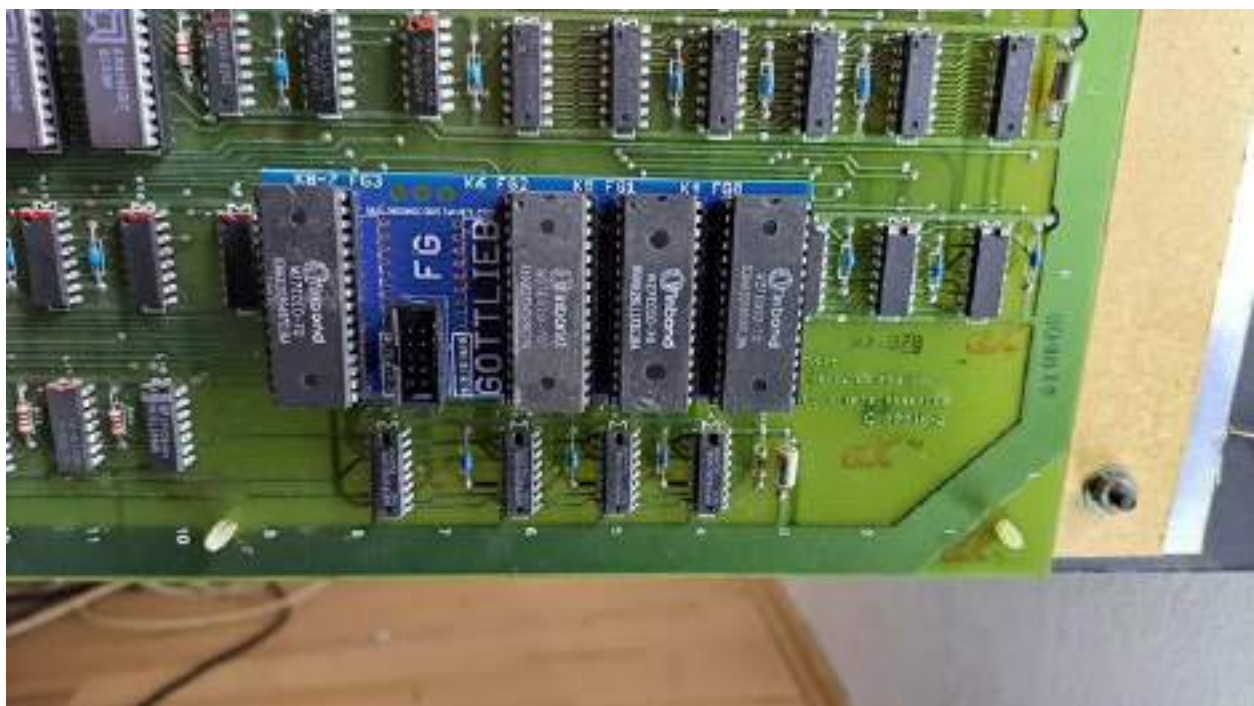
4. Install Sound Daughter Card on Qbert Sound PCB (Not Qbert Main PCB) –



5. Install Background Daughter Card – BGO (E11-E12) and BG1 (E13) On Qbert Main PCB – Remove eproms and **insert at BGO-**



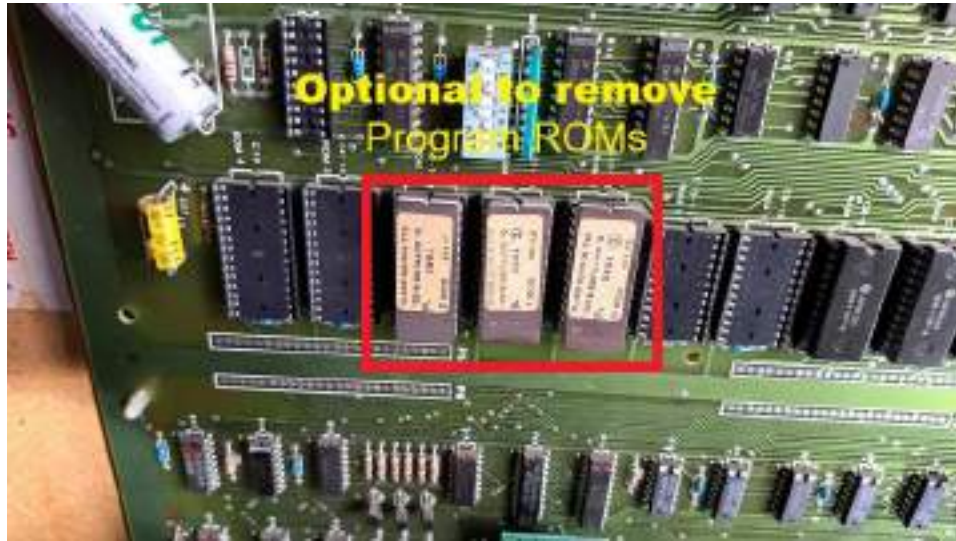
6. Install Foreground Daughter Card – FGO (K4-K7/8) on Qbert Main PCB –
Remove eproms and insert –



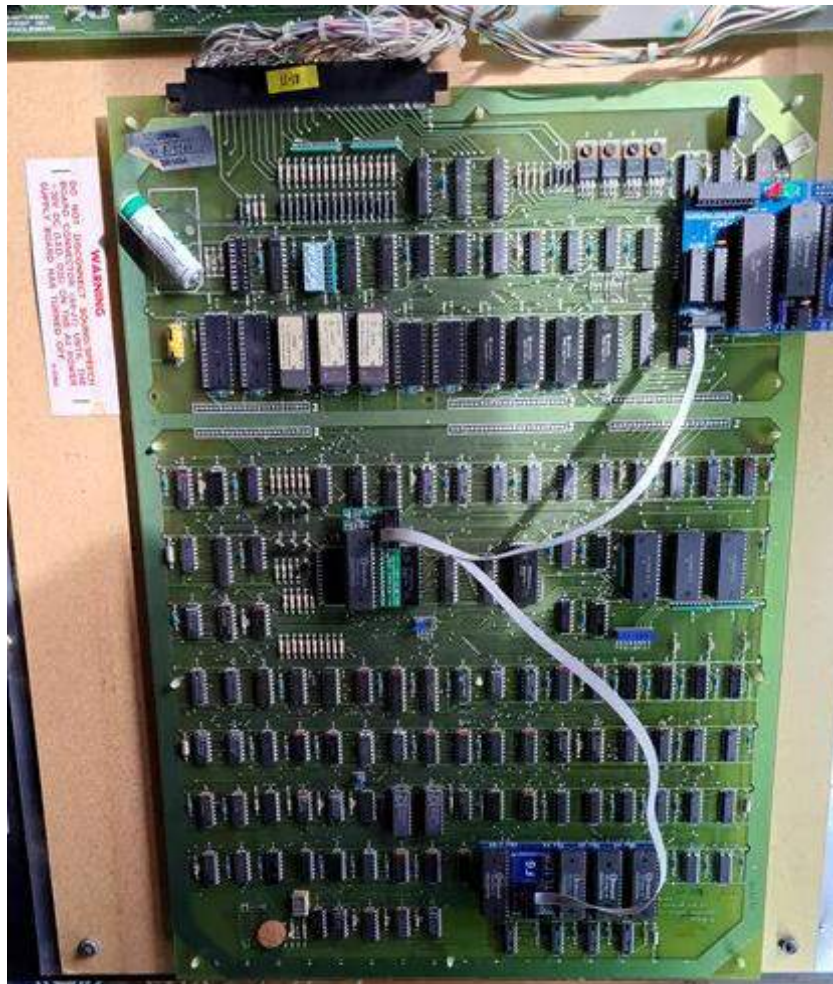
7. Attach Ribbon Cable –



Note: Program ROMs (ROMs 0-4 – (C11-C16) can be removed –



8. You should end up looking like this –



That's it!

Double check your work

Install back in cabinet using pictures you took and any marked connectors

Power up the game and enjoy!

If the game does not start, turn power off immediately, double check your work.

How do I get to the menu settings?

With the power off on your game. Press and hold P1 while you turn the game on. Release P1 button when the screen tells you to. You are now in the main menu settings. This is a feature built into your kits, so the menu settings are not accessible to your guests or family.

Now, having said that, you need to enable this feature in the menu settings, or disable if you want your kit to give you approximately 5 seconds every time you turn on your game.