

Bagman Multigame Installation Guide



Overview

Follow this short pre-install checklist to ensure a smooth, safe installation and reliable operation of your high score save kit.

Safety First

- **Power Off & Unplug:** Turn the game **off** and **unplug the cabinet** before touching the game board.
- **ESD Precautions (Recommended):** Work on an anti-static mat and ground yourself to avoid electrostatic discharge.

Preparation Checklist

- **Verify Board Health:** Confirm your **game board is 100% working** *before* installing the kit.
- **Remove Board Safely:** With power **off**, carefully remove the game board from the cabinet.
- **Label Connectors:** Tag **every connector and cable** you disconnect. Clear labels make re-installation fast and accurate.
- **Record Orientation:** Note the **orientation of each connector/cable**. *(Tip: take photos from multiple angles for reference.)*
- **Set Up Your Workspace:** Use a **well-lit workbench** with enough room to lay out the board, kit, and tools.

Next Step

Follow the instructions step-by-step using the photos below and the labels you created during the preparation checklist.

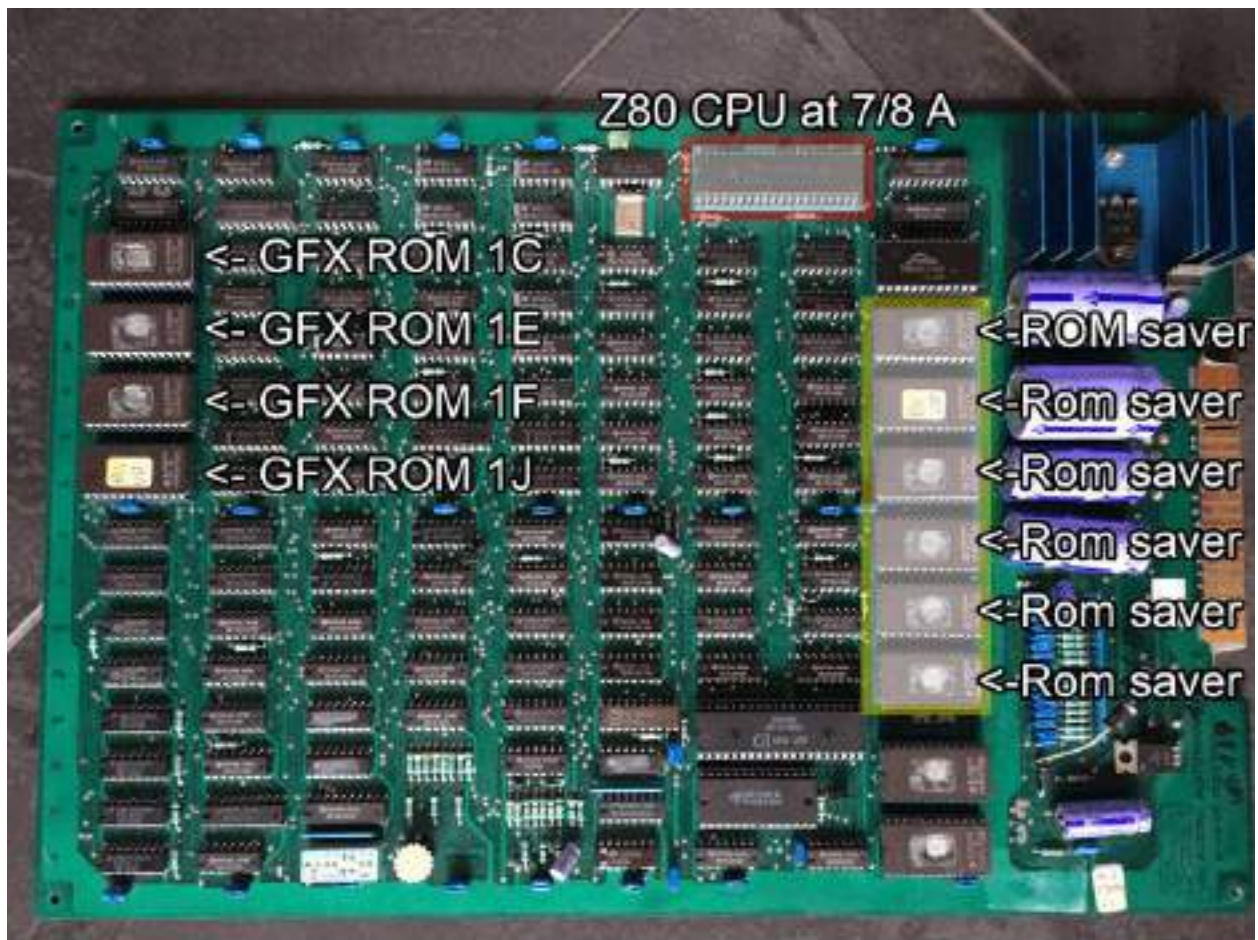
The Bagman Multigame kit contains -

- 1 – z80 Daughter card, 1 – GRFX Daughter card, 1 – Ribbon Cable

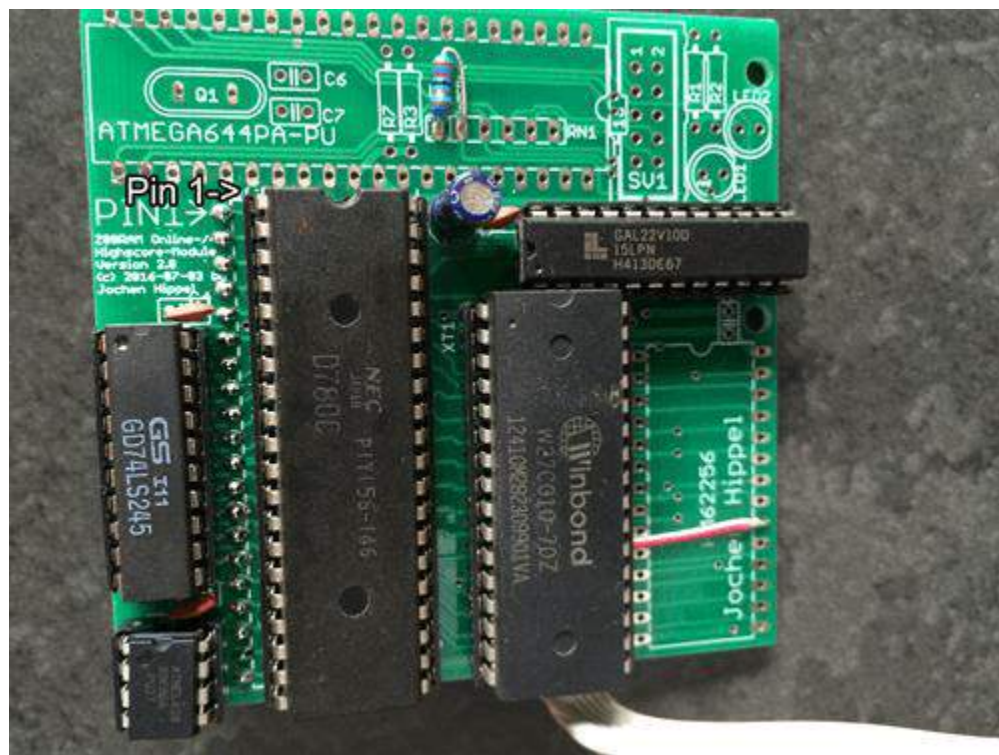
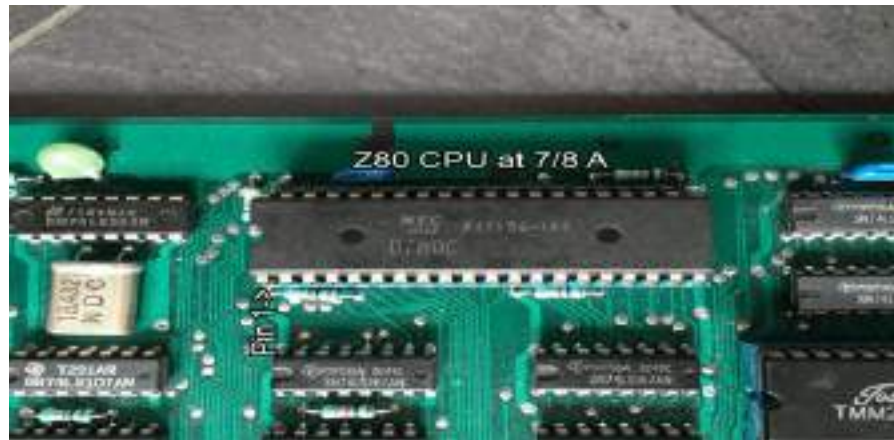
Z80 processor required. Purchase via the product page options, or install with your current Z80.

Overview –

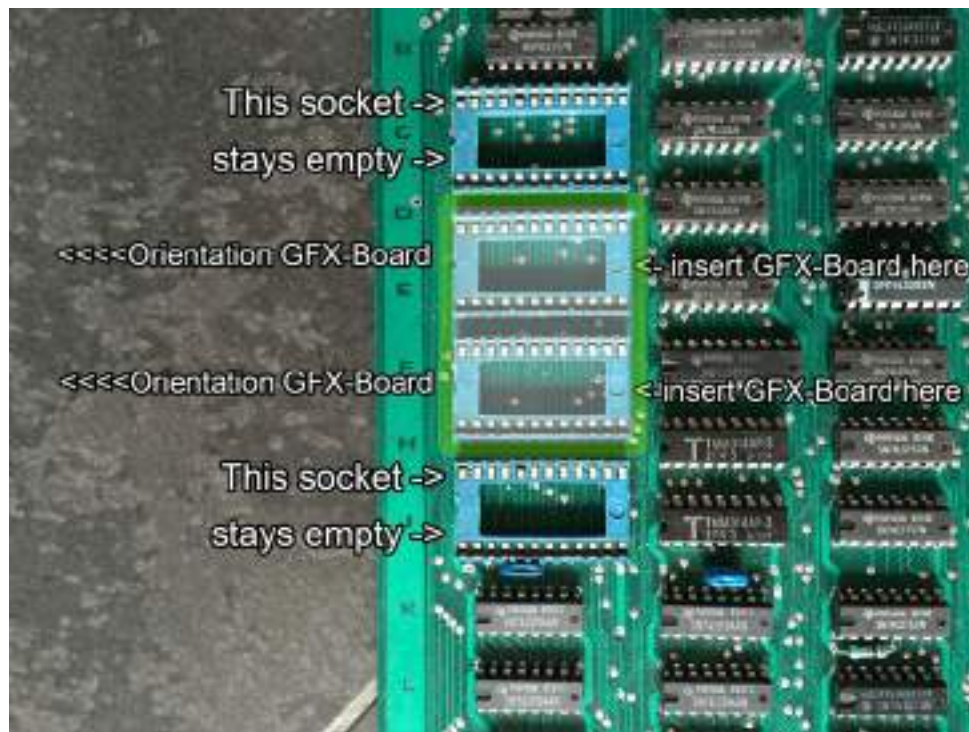
Your Bagman PCB should look like this -



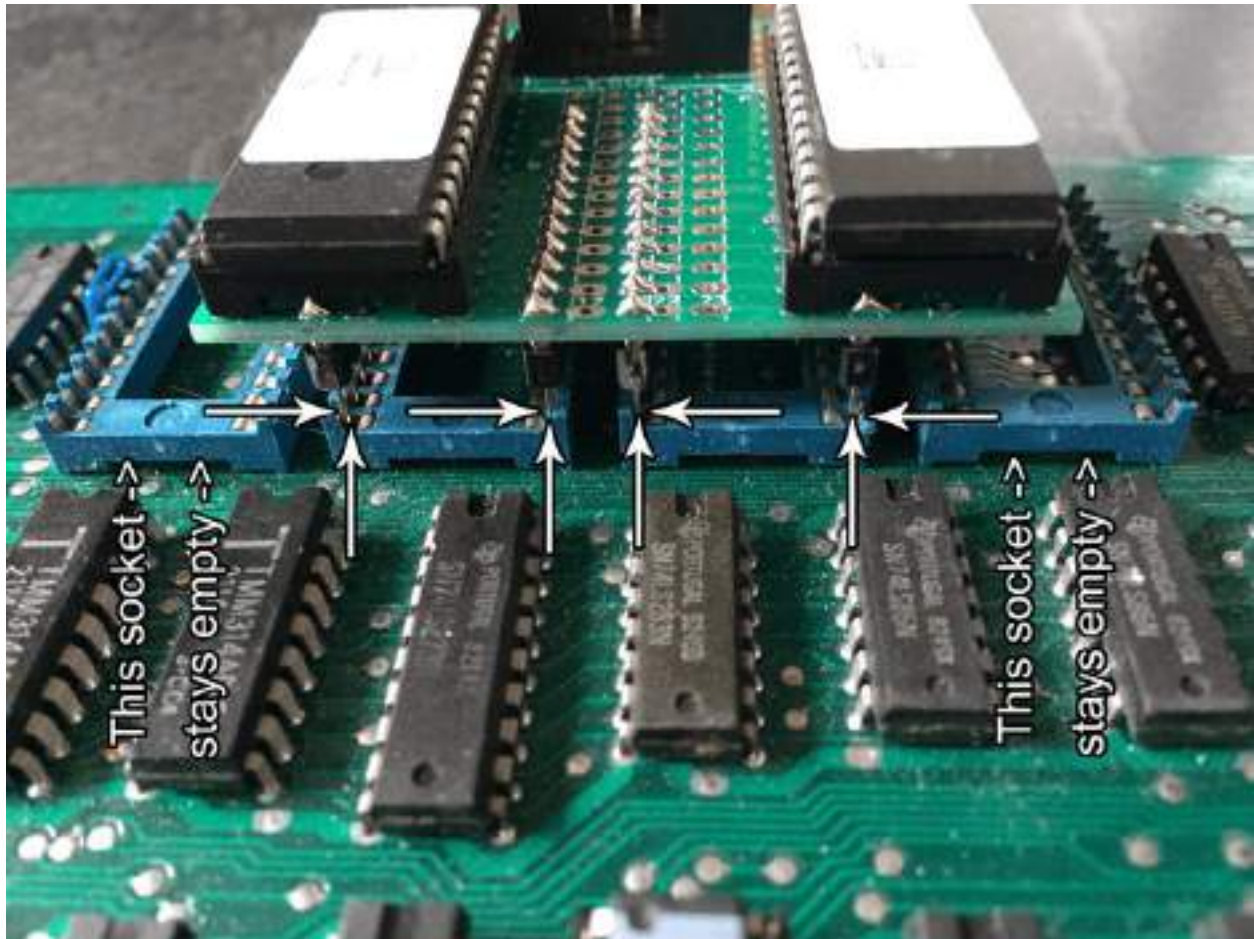
Remove the z80, plug z80 on the main daughter card save kit, then, plug kit where z80 was. Note the notch on the z80.



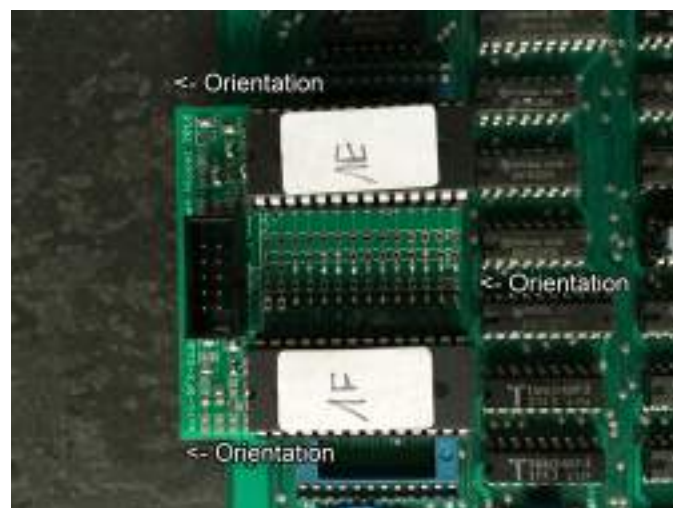
Now remove the GFX ROMs and insert the GFX ROM Daughter card -



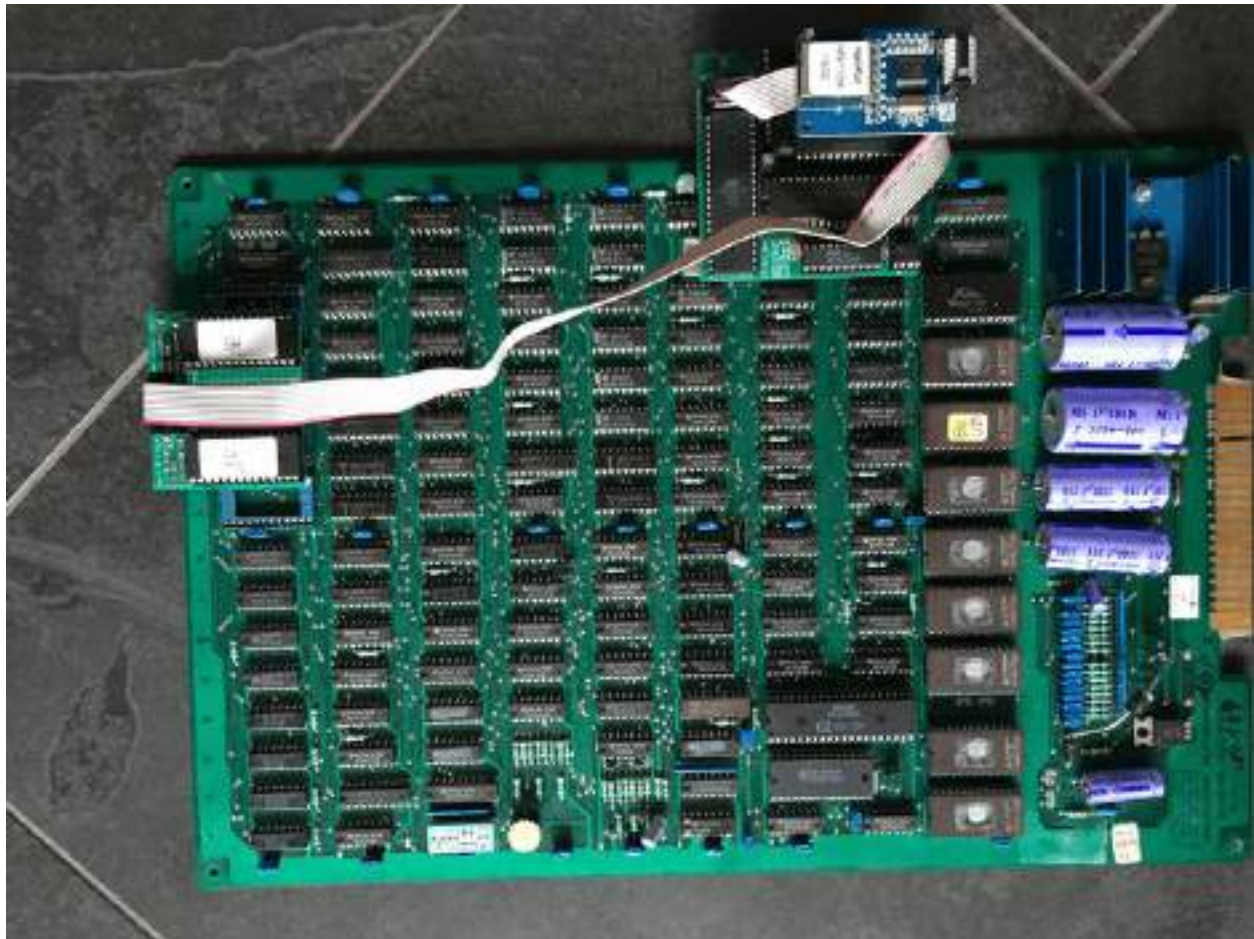
It should look like this –



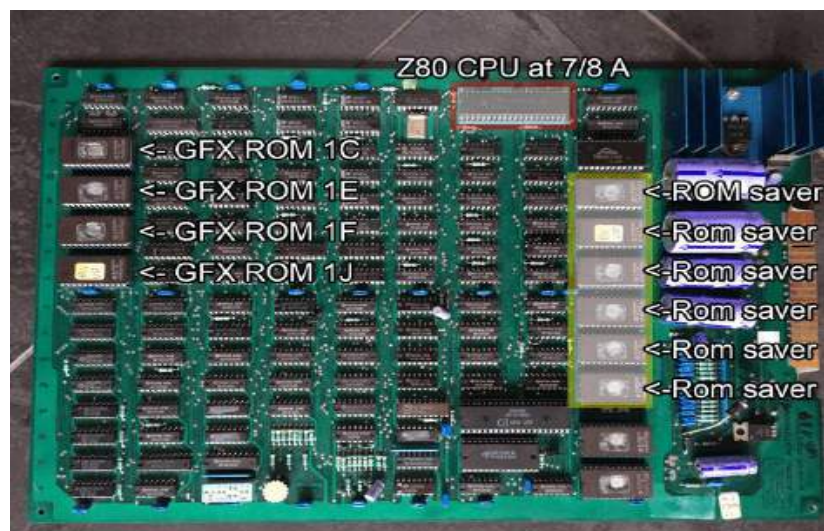
Overhead pic –



Now, connect the provided ribbon cable from the main to the GFX daughter cards like this -



Optional – Remove the original program ROMs on your PCB –



You're done!

- Double check your work
- Install back in cabinet using pictures you took and any marked connectors
- Power up the game and enjoy!
- If the game does not start, turn power off immediately, double check your work.

How do I get to the menu settings?

With the power off on your game. Press and hold P1 while you turn the game on. Release P1 button when the screen tells you to. You are now in the main menu settings. This is a feature built into your kits, so the menu settings are not accessible to your guests or family.

Now, having said that, you need to enable this feature in the menu settings, or disable if you want your kit to give you approximately 5 seconds every time you turn on your game.

Helpful links –

Homepage - <https://www.highscoresaves.com/>

Product Page - <https://www.highscoresaves.com/Bagman-Super-Bagman-Multigame-Free-Play-and-High-Score-Save-Kit/HSSBAGMULTI>

What's a Wi-Fi kit? - <https://www.highscoresaves.com/What-s-a-WiFi-Enabled-Kit-or-Standard-Kit/>

Tips and Tricks -

https://www.highscoresaves.com/media/a6/28/5e/1756433395/Highscoresaves%20Tips%20and%20Tricks_compressed.pdf?ts=1756433395