

SW/ESB

Multigame

Installation Guide



<https://highscoresave.com/>

Steps for a successful install of your online or offline high score save kit -

- Ensure your gameboard is working 100% before installing kit
- Ensure power to game is off before removing your gameboard from cabinet
- Label any connectors that you will be disconnecting. This will make reinstalling easier once kit is on gameboard
- **Note which way your connectors/cables are on.** (We suggest taking pictures to help you remember!)
- Work in a well-lit area on your workbench

The SW/ESB Multigame Kit contains -

1. Main PWA
2. Instruction PROM PWA
3. Vector PWA
4. Sound PWA
5. 3 pin connector cable (violet, grey, white)
6. 3 pin connector cable (yellow, green, blue)

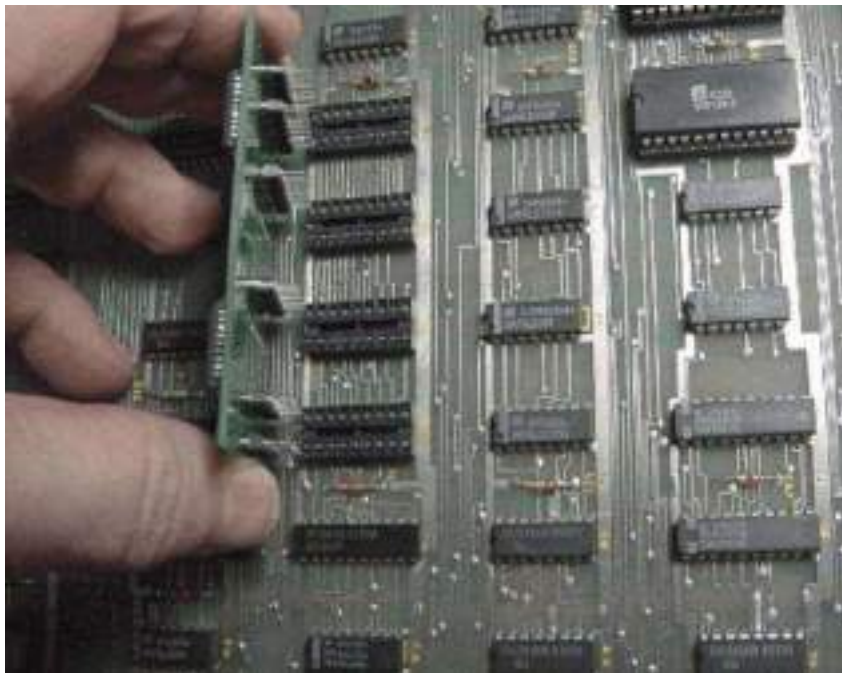
Please note – you will need a 6809E to install on this kit. There is an option to purchase in the drop downs of the product page when you order. Or, you can use an existing one.

Overview –

Remove PROM's 7H, 7J, 7K, 7L from main board.



Be careful aligning the pins when installing the Instruction PROM board as shown below.



Instruction PROM board installed.



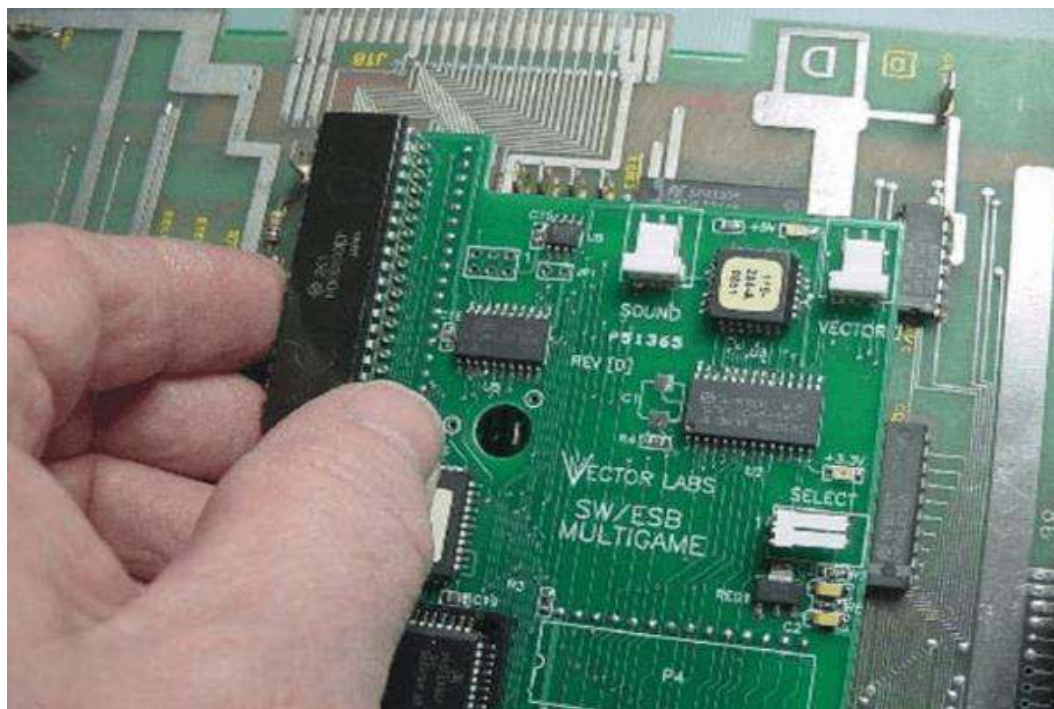
Remove 68B09E processor (2C), NVRAM X2212 (1E) and Eeproms from all 5 locations (1F, 1H/J, 1J/K, 1K/L, 1M) as shown below.



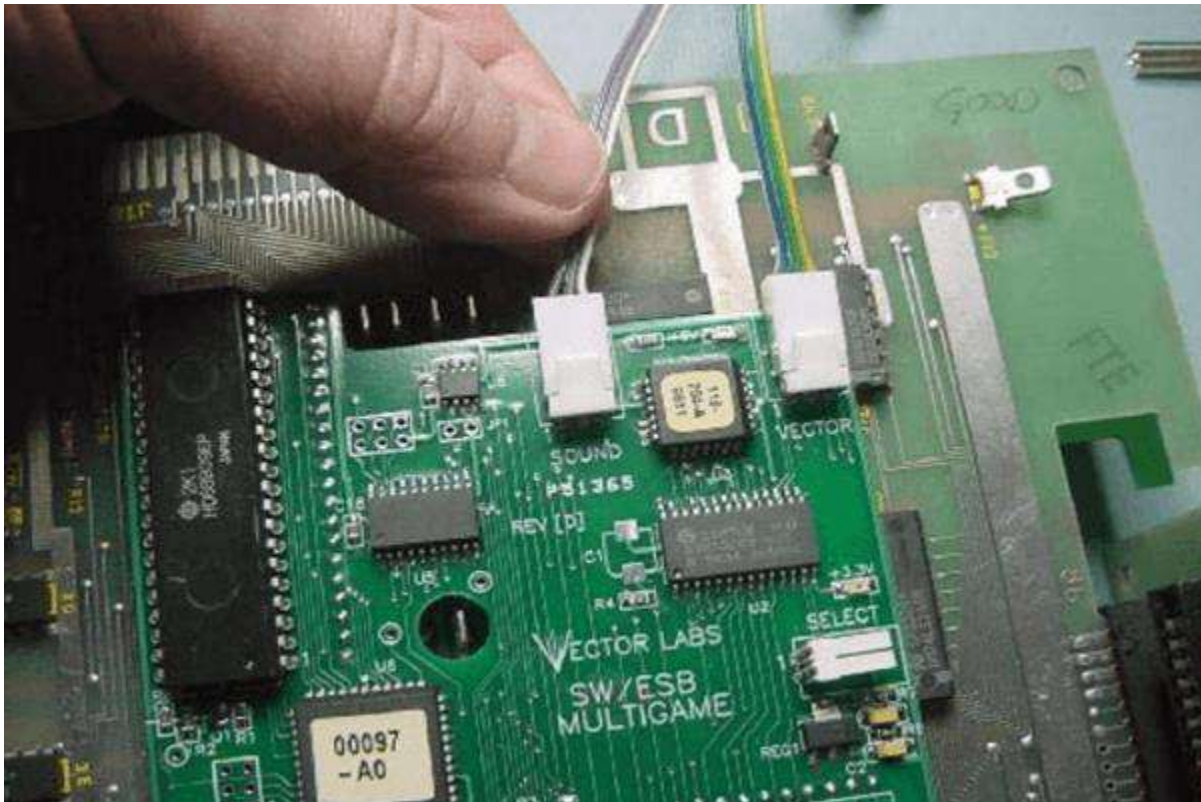
Install kit main board into processor socket 2C & Eprom socket 1F being careful to align the pins properly.



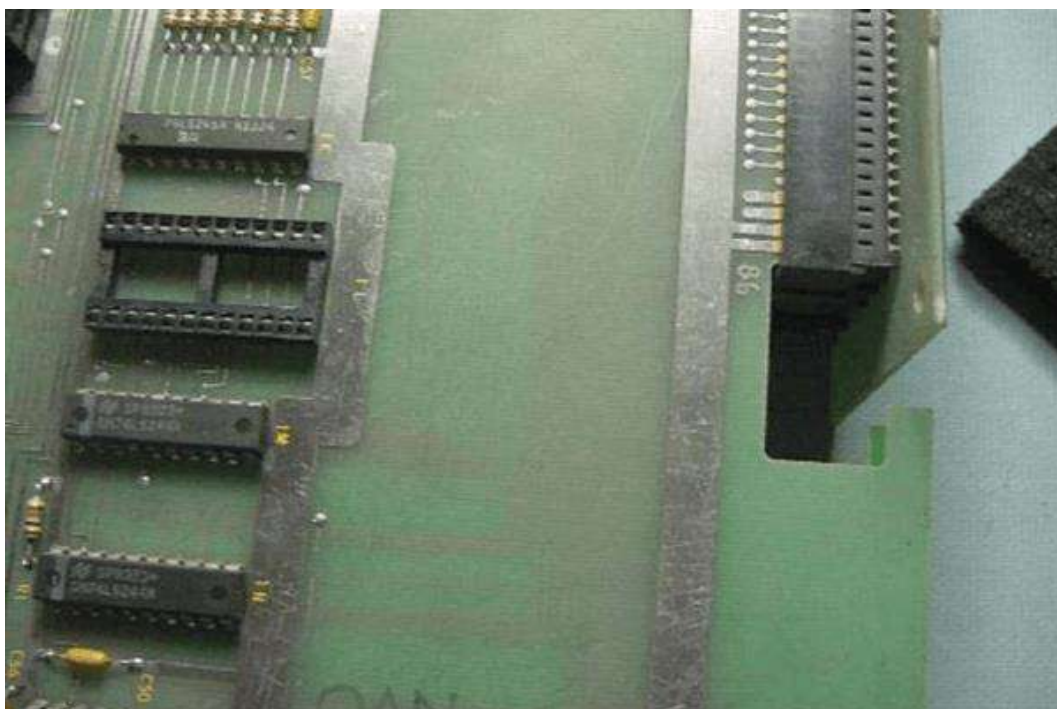
Reinstall 68B09E processor into socket on top of main kit board making sure that the "notch" is towards you as shown below.



Install both 3 pin cables as shown below, The violet, grey, white into the connector labeled “SOUND” and the yellow, green, blue into the connector labeled “VECTOR”



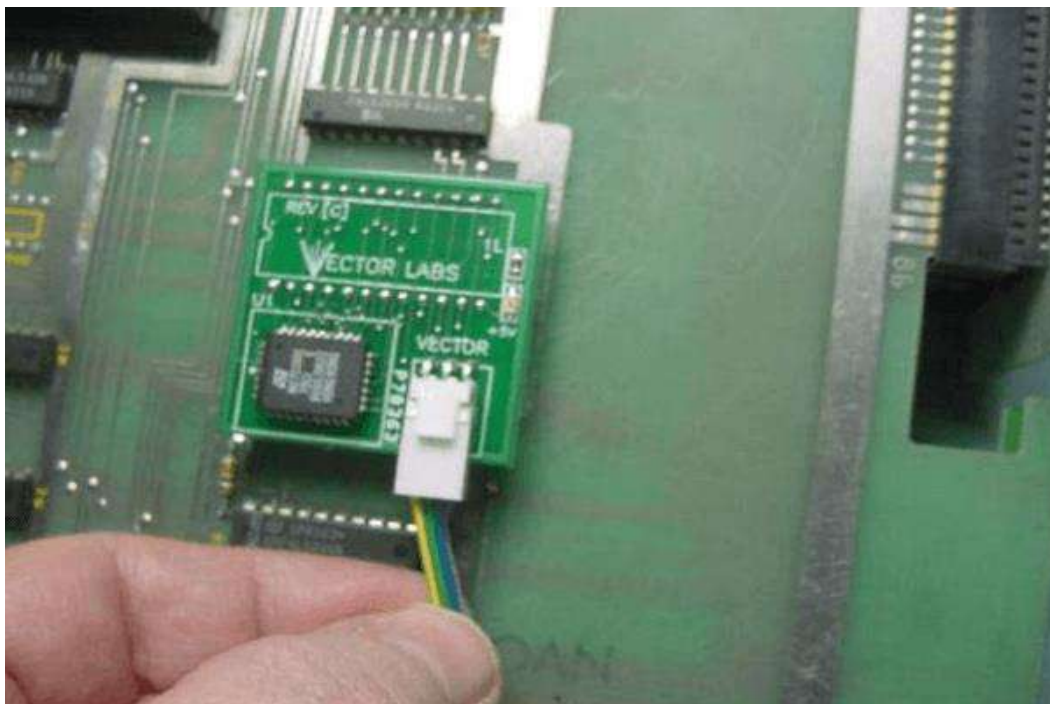
Flip the boardset over and remove the vector Eeprom from socket (1L).



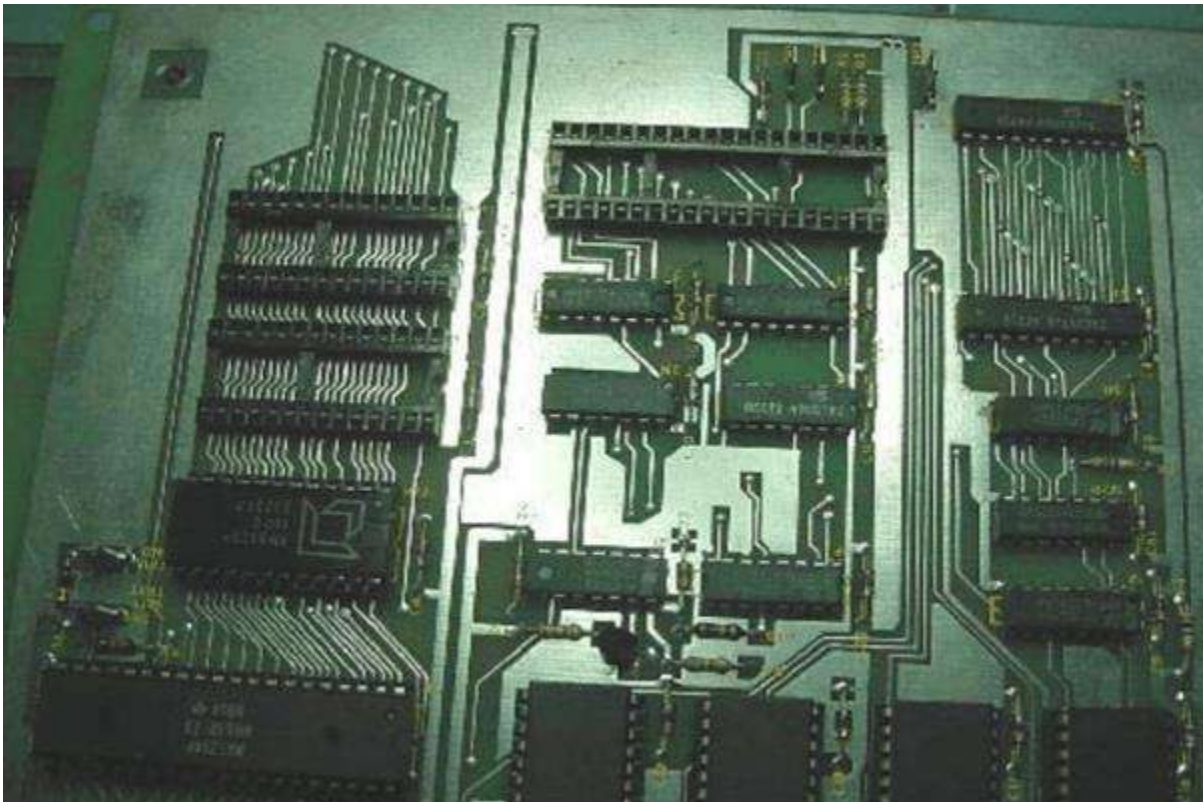
Install the Vector prom replacement board into socket (1L) as shown below.



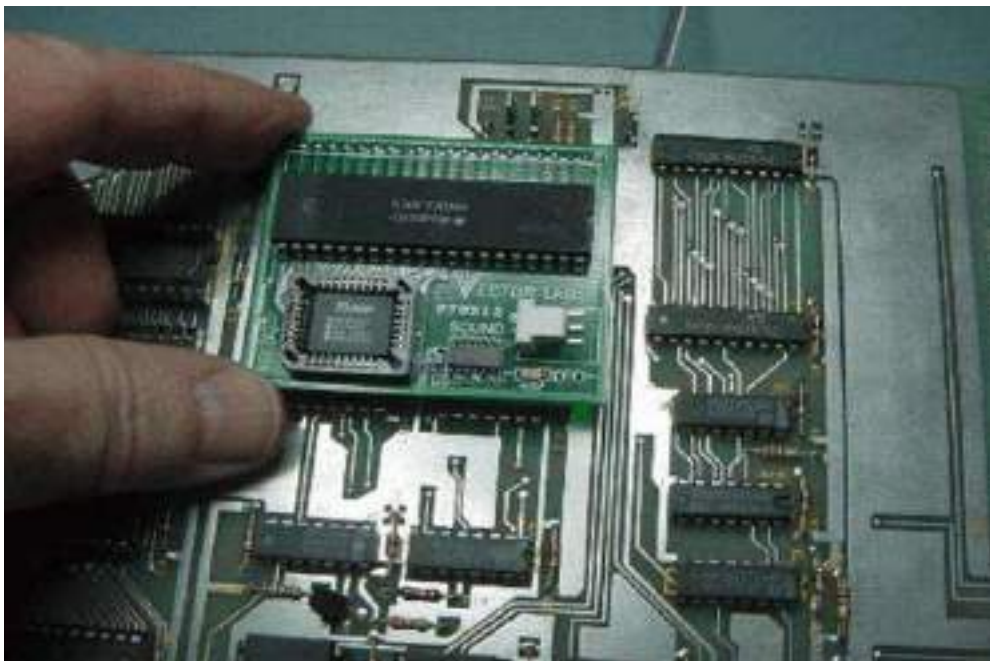
Install the 3 pin cable yellow,green,blue into the white male connector as shown.



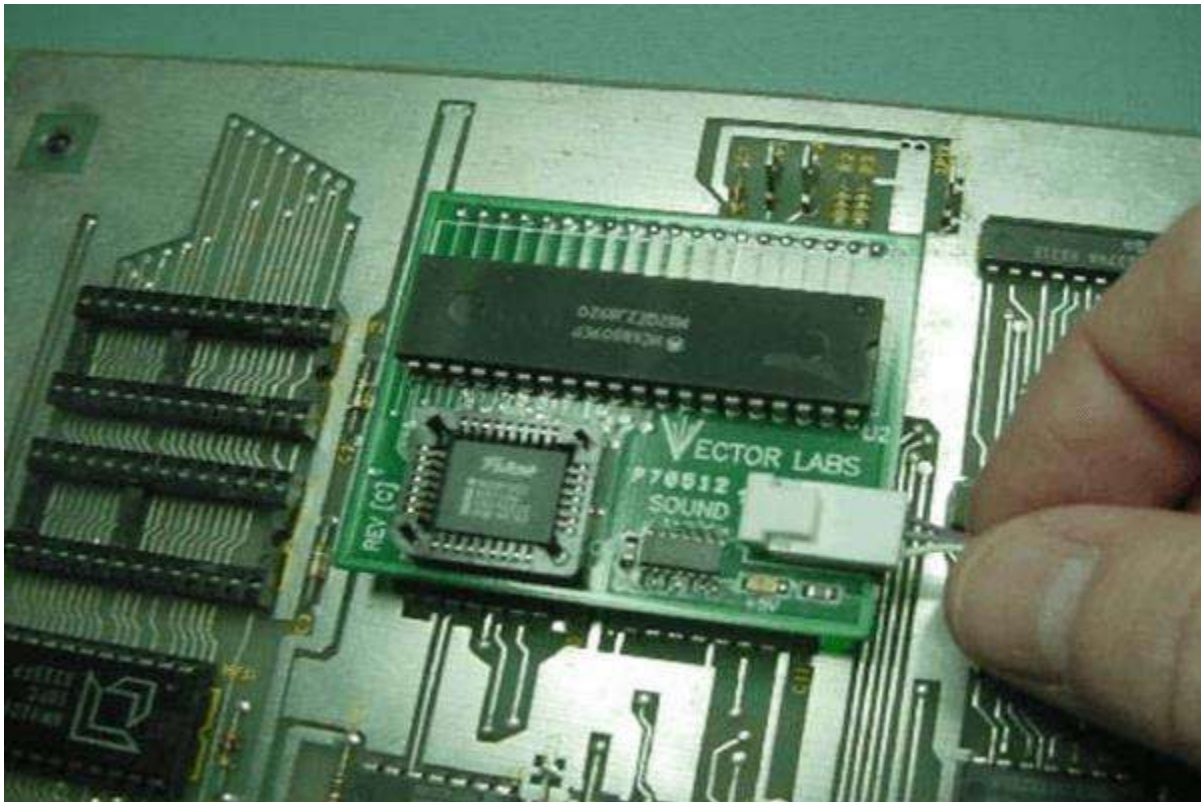
Flip boardset back over and set aside. Remove 68B09E processor from sound board socket location (3K) and Eproms (1J/K & 1H as shown below.



Re-install processor into Sound kit board and then plug board back into socket (3K)



Install the 3 pin cable violet, grey, white into the white male connector as shown below.



That's it!

Double check your work

Install back in cabinet using pictures you took and any marked connectors

Power up the game and enjoy!

If the game does not start, turn power off immediately, double check your work.